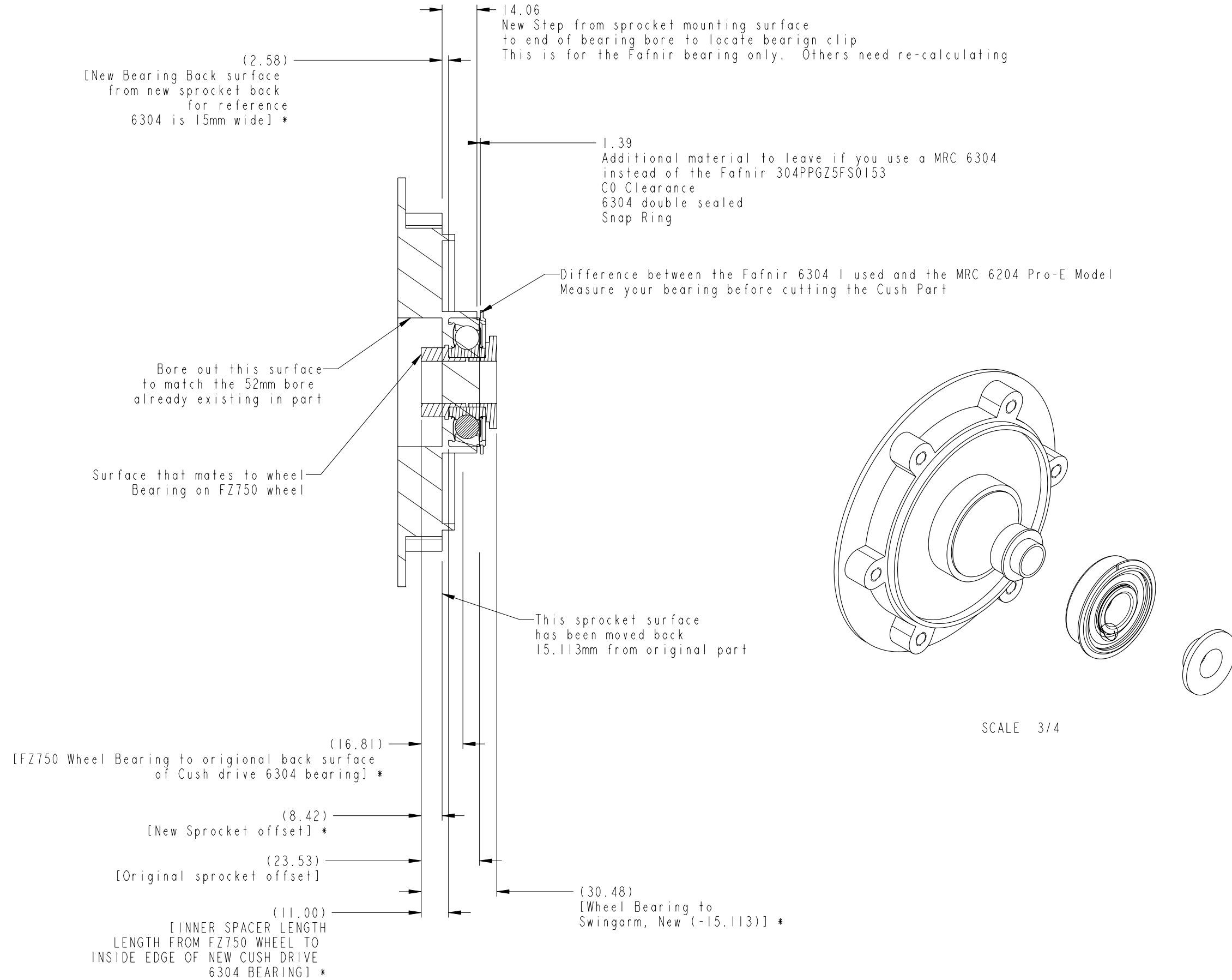
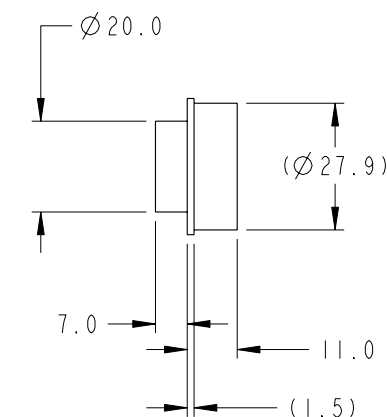
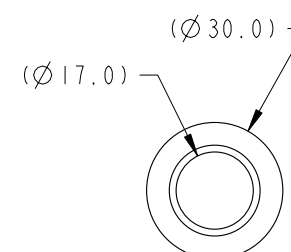
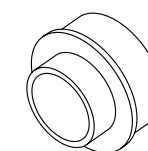


\* These notes and dim's are for reference only

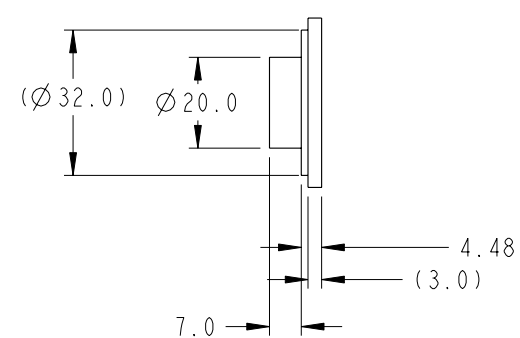
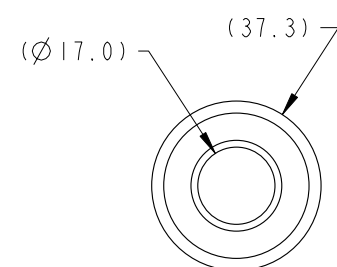
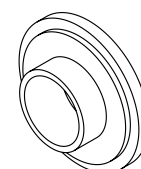
SECTION A-A



All Dim's in (###.#) are reference only.  
 The inside spacer is cut to 11mm and 7mm.  
 This accounts for the movement in the back  
 side of the bearing and allows for pressing in  
 the outside spacer to be pressed in with a 1mm  
 gap to allow removal of the spacers if needed.  
 The inside and outside spacer are made from  
 the stock SRX spacers. The inside should come  
 with the new cush drive if you choice to do so.  
 The RX350 and some FJ600's use the same cush drive.



**INSIDE SPACER CUTS**



**OUTSIDE SPACER CUTS**